



FS-N11CP

Fiber Amplifier, M8 Connector Type, Main Unit, PNP



*Please note that accessories depicted in the image are for illustrative purposes only and may not be included with the product.

Specifications

Model		FS-N11CP
Type		Standard 1 output M8 connector*1
Output		PNP
Main unit/expansion unit		Main unit
Control output		1 PNP open collector 24 V; 1 output max: 100 mA or less; 2 output total: 100 mA or less (used stand-alone)/20 mA or less (multiple connections); residual voltage 1 V or less
External input		1 Input time 2 ms (ON)/20 ms (OFF) or more (25 ms or more (ON/OFF) when external calibration is selected.)
Light source LED		Red, 4-element LED
APC		ON/OFF switchable (Factory setting: OFF)
Response time		50 μ s (HIGH SPEED) /250 μ s (FINE) /500 μ s (TURBO) /1 ms (SUPER) /4 ms (ULTRA) /16 ms (MEGA)
Number of interference prevention units		0 for HIGH SPEED; 4 for FINE; 8 for TURBO/SUPER/ULTRA/MEGA (When set to double, the number of interference-prevention units will be doubled.)
Unit expansion		Up to 16 units can be connected total (two output type is treated as two units)
Rating	Power voltage	12 to 24 VDC \pm 10 %, Ripple (P-P) 10 % or less
	Current Consumption	Normal: 950 mW or less (39 mA max. at 24 V, 52 mA max. at 12 V)*2 Eco on mode: 850 mW or less (35 mA max. at 24 V, 44 mA max. at 12 V)*2 Eco Full mode: 520 mW or less (21 mA max. at 24 V, 26 mA max. at 12 V)
Environmental resistance	Ambient light	Incandescent lamp: 20,000 lux or less, Sunlight: 30,000 lux or less
	Ambient temperature	-20 to +55 °C -4 to +131 °F (No freezing)*3
	Relative humidity	35 to 85 % RH (No condensation)
	Vibration resistance	10 to 55 Hz, Double amplitude 1.5 mm 0.06" , 2 hours in each of the X, Y, and Z directions
Shock resistance		500 m/s ² , 3 times in each of the X, Y, and Z directions
Case material		Both main unit and expansion unit housing material: Polycarbonate
Weight		Approx. 22 g

*1 Use a cable length of 30 m **98.43'** or less for M8 connector and e-CON connector types.

*2 Increases 100 mW (4.0 mA) for High Speed mode

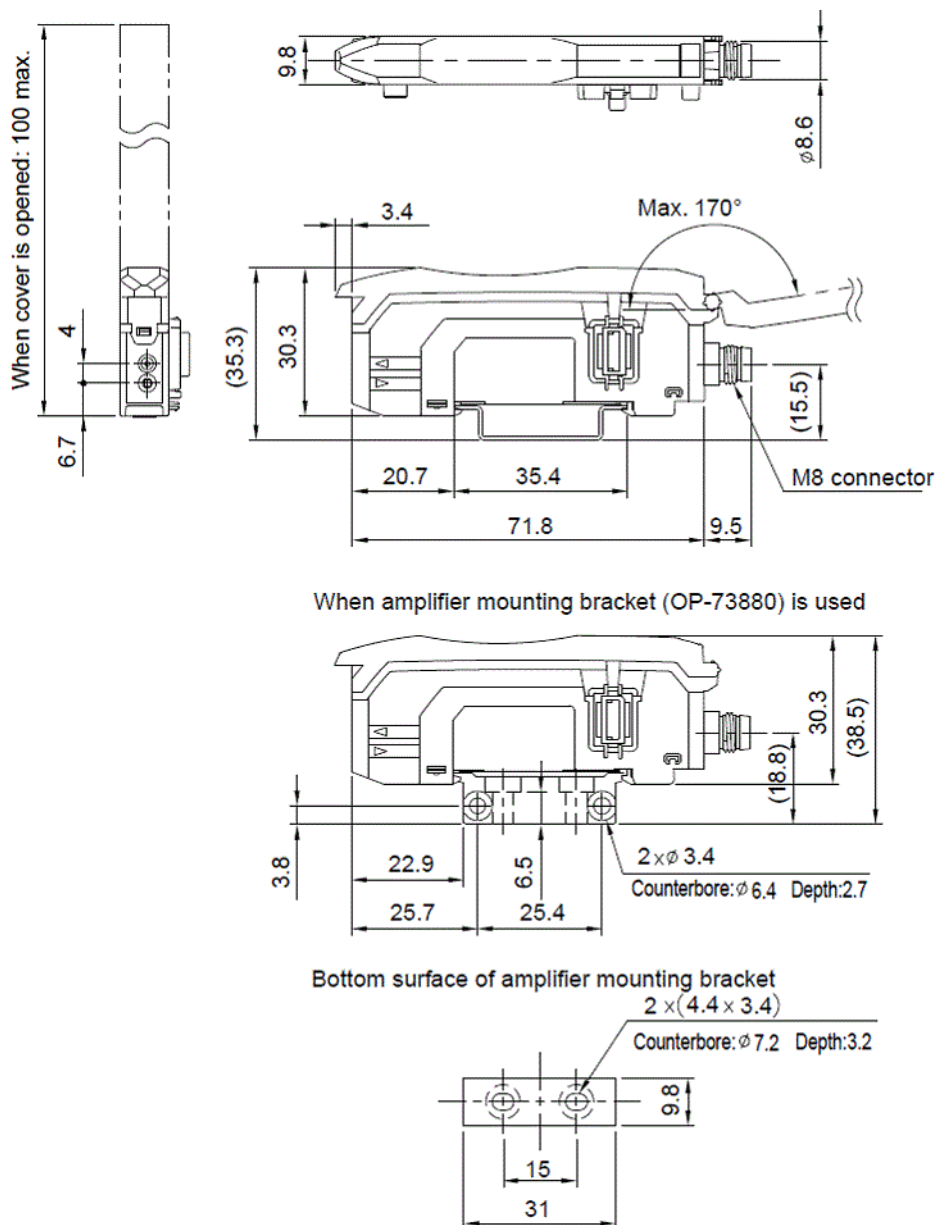
*3 One or two more units connected: -20 to +55 °C **(-4 to +131 °F)**; 3 to 10 more units connected: -20 to +50 °C **(-4 to +122 °F)**; 11 to 16 more units connected: -20 to +45 °C **(-4 to +113 °F)**.

When using 2-outputs, one unit is counted as two units. All temperature regulations are for when the unit is mounted on a DIN rail and installed on metal sheeting.

Dimensions

* Download CAD file or product manual for larger image/text and more detail.

FS-N11CN / N11CP / N13CP

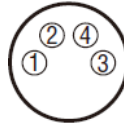


* 1 FS-N11CN(P)/N13CP/ is not provided with an expansion connector.

I/O Circuit Connection diagram

* Download CAD file or product manual for larger image/text and more detail.

Output Circuit Diagram

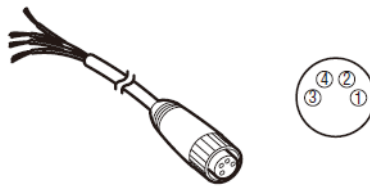


*1 FS-N11N/N11MN/N13N only

*2 FS-N11MN only

*3 The FS-N13N/N14N has a white cable as separate output 2.

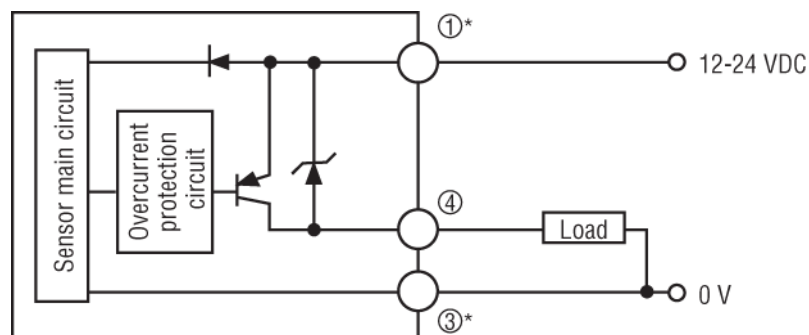
Output Circuit Diagram



*1 FS-N11P/N13P/N13CP only

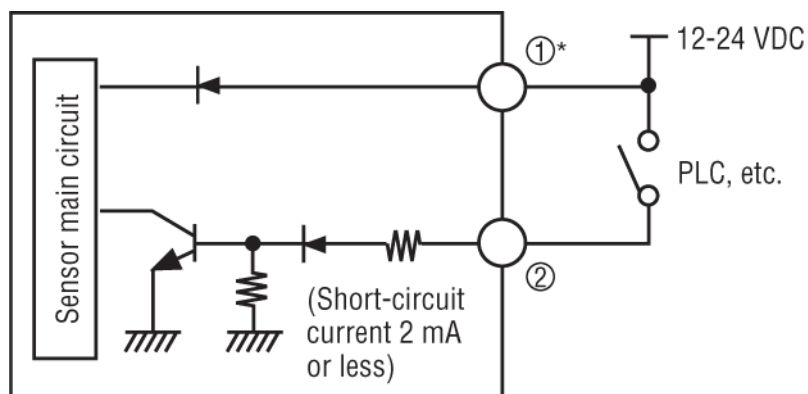
*2 The FS-N13P/N14P has a white cable as separate output. The FS-N13CP/N14CP has pin 2 as separate output 2.

Output Circuit Diagram



* FS-N11CP only

Input Circuit Diagram



* FS-N11CP only