



SPECK PUMPEN Systemtechnik GmbH

Regensburger Ring 6 - 8 D-91154 Roth Tel.: 09171/809-0 Fax: 09171/809-10 www.speck.de

Customer Speck ABC UK Ltd. AreenA House M  
City CW11 3HL Cheshire  
Enquiry vom  
Project

Contact  
Phone  
Fax  
E-mail

Editor Adamiec, Ulf-Peter  
Phone +49 9171 809 0  
Fax  
E-mail ulf.adamiec@speck.de

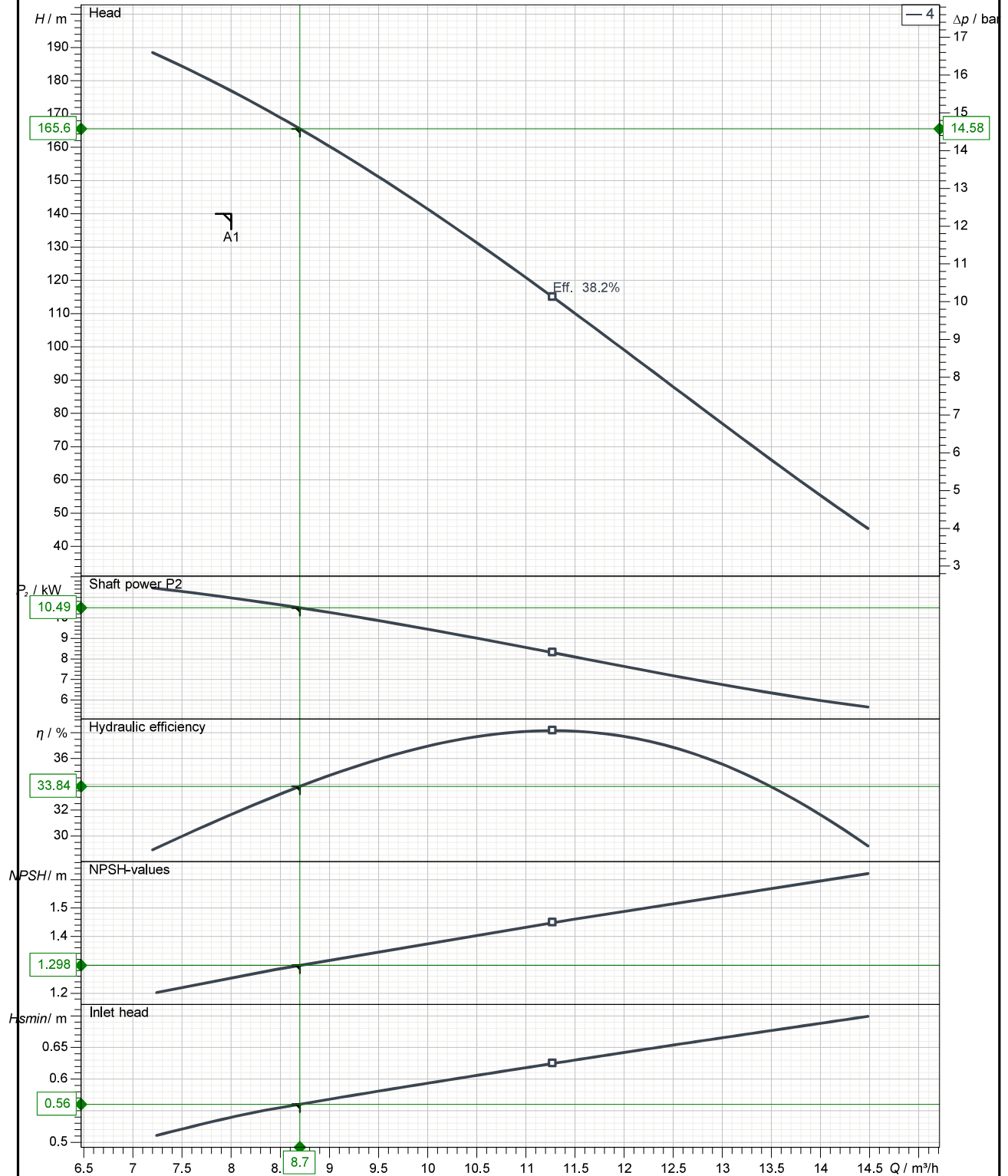
performance data level in relation to:  
Water; 170°C; 897.6kg/m³; 0.1633mm²/s

Speed 1750

Flow ± 10%

Head ± 10%

Performance data ± 10%



## Technical data sheet

### Side channel pump - Aggregate without motor

#### ASKG4004-072-30

#### Information about fluid

Fluid	Water
Concentration	100 %
Solids	0 Wght-%
No corrosive, abrasive matters	

#### Operating Data

Working Point	WP 1	WP 2
Operating temperature	170 °C	---
Density	897.6 kg/m <sup>3</sup>	---
Kinematic viscosity	0.2 mm <sup>2</sup> /s	---
Vapor pressure	7.926 bar	---
pH value	7	---
Volume flow	8 m <sup>3</sup> /h	---
Total head	140 m	---
Hydraulic efficiency	33.8 %	---
Shaft power P2	10.5 kW	---
Inlet pressure	---	---
Outlet pressure	14.6 bar	---
Difference pressure	---	---
NPSH system	---	---
NPSHr	1.30 m	---
Perm. casing pressure at operating temp.	37.9 bar	---

#### Performance curve

Rotation speed	1750 1/min
Min. volume flow	7.20 m <sup>3</sup> /h
Max. volume flow	14.48 m <sup>3</sup> /h
Max. head	188.50 m
Max. operating pressure	16.60 bar

#### Installation/Environment

Location	Inside
Roof	Yes
Altitude above sea level	< 1000 m
ATEX category	---
Min. temperature	20 °C
Max. temperature	40 °C
Max. relative humidity	55 %

#### Pump

Impeller type	Side channel im-peller
Direction of rotation (view from drive to pump)	Counter-clockwise
Pressure rating	PN 40
Flange standard	DIN EN 1092-1
Flange hole pattern according to	PN 40
Flange groove DIN 2512 - D	Without groove
Suction port nominal ø	DN 80
Delivery port nominal ø	DN 40
Calming section suction recommended	> 800 mm
Coupling protection	40 - BG 160
Mechanical seal cooling	cooled pump frame
Conversion kit hot operation	✓

#### Shaft seal

Mechanical seal	single acting
Balancing	balanced
Manufacturer	CHETRA Dichtungs-technik AG
Manufacturer Description	Chetra 151
Standard designation	EN 12756-NB028S1-AQ1EGG
Speck Description	072
Max. pressure	40 bar
Material combination	SiC/A-carbon
Elastic elements	EPDM

#### Motor

Motor type	3~Motor
Rated power	12.60 kW
Frequency	60 Hz
Pole number	4
Size	160M
Mounting	IM B3
Motor item	---

#### Coupling

Manufacturer	KTR
Series	Standard
Size	38
Distance from pump shaft to motor shaft	24 mm

Customer 10102      Quotation      848282      Item 1

### Baseplate

Description	U 350.1200L
Lugs	U-profile
Length	1200 mm
Width	350 mm

### Materials

Suction casing	0.7040
Stage	0.7040
Discharge casing	0.7040
Shaft seal casing	0.7040
Side channel impeller	1.4408
Impeller	0.6025
Shaft	1.4122
Pump frame	0.7040
Seal stage	Epple 37
Bearing stage	A-carbon
Bearing shaft	A-carbon

### Material Tests

Suction casing	---
Side channel impeller	---
NPSH-impeller	---
Discharge casing	---
Shaft seal casing	---
Shaft	---
Stage	---

### Tests & inspections

---
-----

### Shipping data

Pump varnish	Speck Standard RAL 9006
Motor varnish	---
Additional informations	

Pumps according to the technical requirements of DIN EN ISO 5199 Class 2.

Tests and inspections according to EN 10204. Number according to quotation respectively order conformation.

Customer: 10102

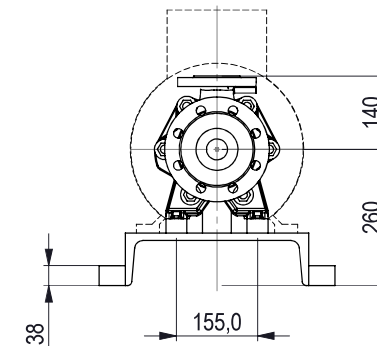
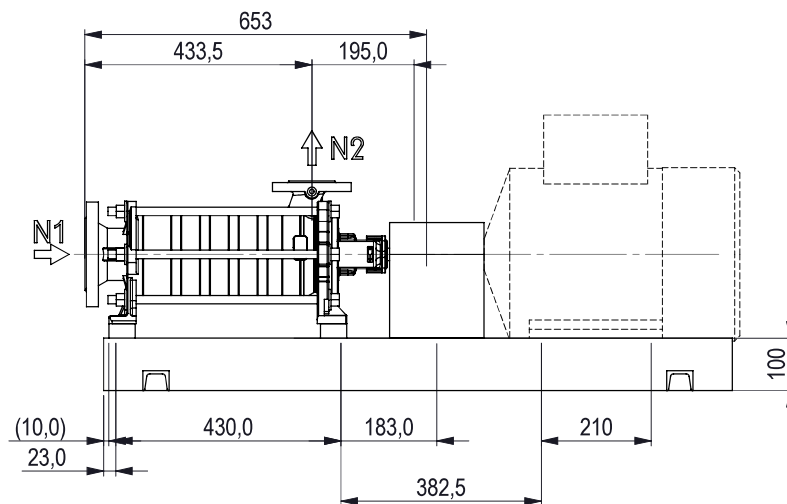
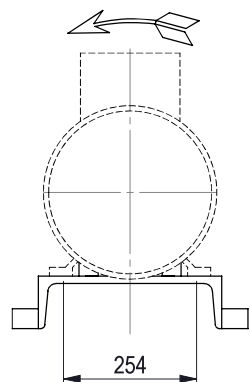
Quotation: 848282

Item: 1

29.09.22

**speck**


Side channel pump - Aggregate without motor ASKG4004-072-30



Flow direction: axial - top

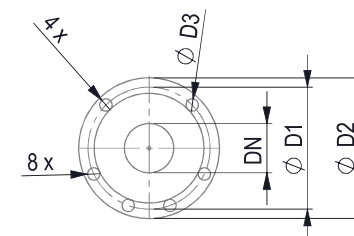
IM B3, 160M, Pole number 4

KTR Rotex Standard - 38

Baseplate: U 350.1200L

Pad pump: 40x50x28

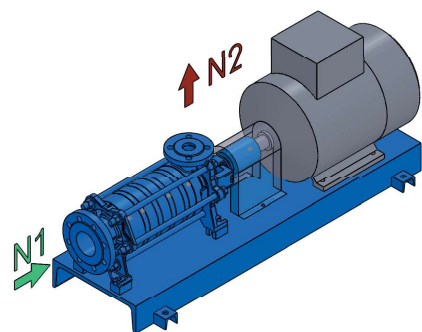
Pad motor: ---

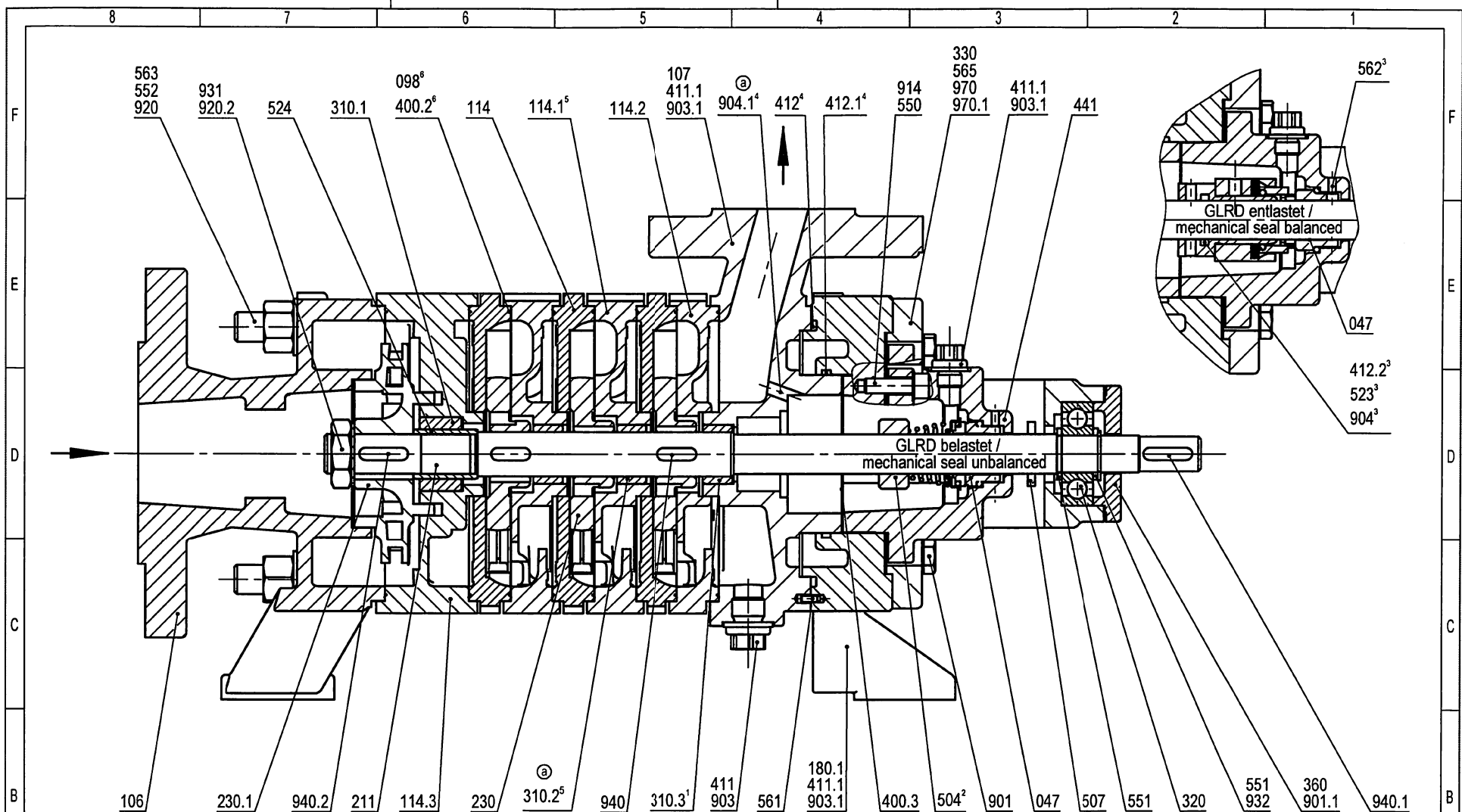
Flange acc. to DIN-EN 1092, drilled acc. to  
DIN EN 1092-1 PN 40

	N1	N2
DN	DN 80	DN 40
D1	160	110
D2	200	150
D3	18	18
n	8	4

All rights reserved for this drawing.  
Reproduction or distribution of this  
document to third parties is  
prohibited without our approval.

The indicated motor  
dimensions are approx.  
dimensions. Exact details  
correspond to the actual model  
used.





<sup>1</sup> Gleitlager (310.3) nur bei ASKG 20 und nur bei gekühlter Ausführung <sup>Ⓐ</sup>

<sup>2</sup> GLRD belastet mit Stelling (504)

<sup>3</sup> GLRD entlastet mit Wellenhülse (523) + O-Ring (412.2) + Gewindestift (904) + Zylinderstift (562)

<sup>4</sup> nur bei gekühlter Ausführung

<sup>5</sup> entfällt bei ASKG 2001/3201/3301/4001/5001/6501 <sup>Ⓐ</sup>

<sup>6</sup> wahlweise Dichtschnur / Dichtstoff (098) oder Graphit-Flachdichtung (400.2)

<sup>1</sup> sleeve bearing (310.3) for ASKG 20 and for cooled execution only <sup>Ⓐ</sup>

<sup>2</sup> mechanical seal unbalanced with adjusting ring (504)

<sup>3</sup> mechanical seal balanced with shaft sleeve (523) + o-ring (412.2) + set screw (904) + parallel pin (562)

<sup>4</sup> for cooled execution only

<sup>5</sup> not applicable by ASKG 2001/3201/3301/4001/5001/6501 <sup>Ⓐ</sup>

<sup>6</sup> optional sealing cord / sealing compound (098) or graphite-flat gasket (400.2)

				Allgemeintoleranz nach	Oberflächenangabe nach	Maßstab:	Format	/3D
				Datum	Name	Entworfen für Werkstoff:		
				Bearb.	17.02.16	dg	Rohteil / Modell-Nr.:	
				Gepr.	17.02.16	ig	Benennung:	
				Form			ASKG 20-65	
							Gleitlagerung (Kohle) / sleeve bearing (carbon)	
							Seitenkanalpumpe / side channel pump	
							Zchg. Nr.:	
							E 1420.053	
							Entstanden aus:	
							Blatt	
							1	
							2 Bl.	

Für diese Zeichnung behalten wir uns alle Rechte vor. Ohne unsere vorherige Zustimmung darf sie weder vervielfältigt noch Dritten zugänglich gemacht werden.

**speck**



D-91154 ROTH

	4	3	2	1			
E	047 098 106 107 114 114.1 114.2 114.3 180.1 211 230 230.1 310.1-310.3 320 330 360 400.2-400.3 411-411.1 412-412.2 441 504 507 523 524 550 551 552 561 562 563 565 901-901.1 903-903.1 a 904-904.1 914 920;920.2 931 932 940-940.2 970-970.1	Gleitringdichtung Dichtschnur / Dichtstoff Sauggehäuse Druckgehäuse Saugstufe Druckstufe I Druckstufe II Stufe N Ständer Welle Sternrad Lauftrad Gleitlager Kugellager Lagerkörper Lagerdeckel Flachdichtung Dichtring O-Ring Gehäuse für Wellendichtung Stelling Spritzring Wellenhülse Wellenschutzhülse Fächerscheibe Stützscheibe Spannscheibe Kerbstift Zylinderstift Bolzen Niet 6-kt Schraube Verschlusschraube Gewindestift I-6-kt Schraube 6-kt Mutter Sicherheitsscheibe Sicherungsring Passfeder Schild	mechanical seal sealing cord / sealing compound suction casing discharge casing suction stage discharge stage I discharge stage II stage N pump frame shaft star wheel impeller sleeve bearing ball bearing bearing housing bearing cover flat gasket sealing ring o-ring casing for shaft seal adjusting ring splashing shaft sleeve shaft protecting sleeve serrated washer supporting washer locking disc grooved pin parallel pin casing bolt rivet hexagon head screw screwed plug threaded pin hexagon socket head screw hexagon nut lock washer locking ring fitting key plate	E	D	C	B